



Choose Well.
Choose IGL.

IGL Limited

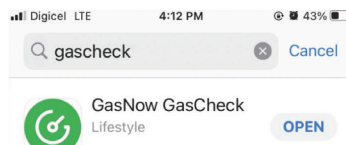
CYLINDER GAS CHECK DEVICE INSTRUCTIONS



This device only works on 11kg & 14kg cylinders.

1 Installation Steps and Startup 4 Parameter Setup

- ▶ Open App store
- ▶ Search for "gascheck"
- ▶ Verify the correct icon
- ▶ Install Application



2 Turn on Bluetooth & Open Application

- ▶ Allow Notifications
- ▶ Allow Bluetooth

"Gas ✓ Check" Would Like to Send You Notifications
Notifications may include alerts, sounds, and icon badges. These can be configured in Settings.

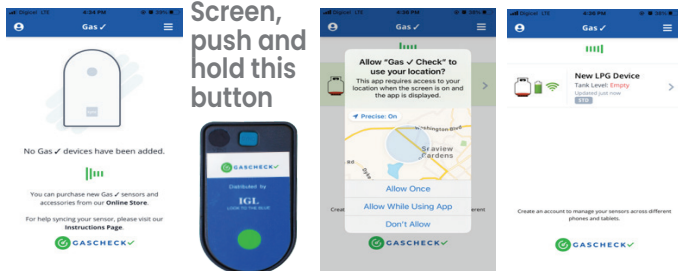
Don't Allow Allow

"Gas ✓ Check" Would Like to Use Bluetooth
We use Bluetooth to connect to the tank sensor hardware device.

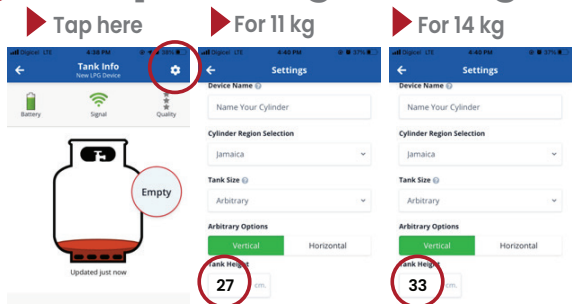
Don't Allow OK

3 Main Screen & Device Pairing

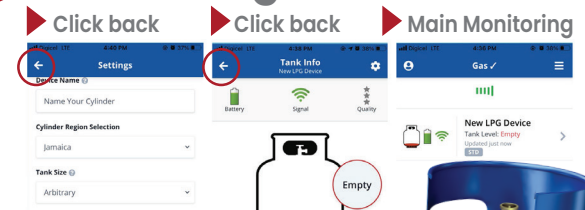
- ▶ Start-up Screen
- ▶ While on Start-up Screen, push and hold this button
- ▶ Select Preference
- ▶ Completed Paired Screen



5 Setup for 11kg vs. 14kg



6 Monitoring



7 Mounting Device to Cylinder

- ▶ Wipe clean the bottom of your cylinder
- ▶ Place device (magnet-side up) underneath the cylinder
- ▶ Stand up your cylinder
- ▶ Observe results after 3 minutes.



PLEASE REMEMBER TO REMOVE YOUR DEVICE FROM THE CYLINDER BEFORE RETURNING FOR REFILLING!

